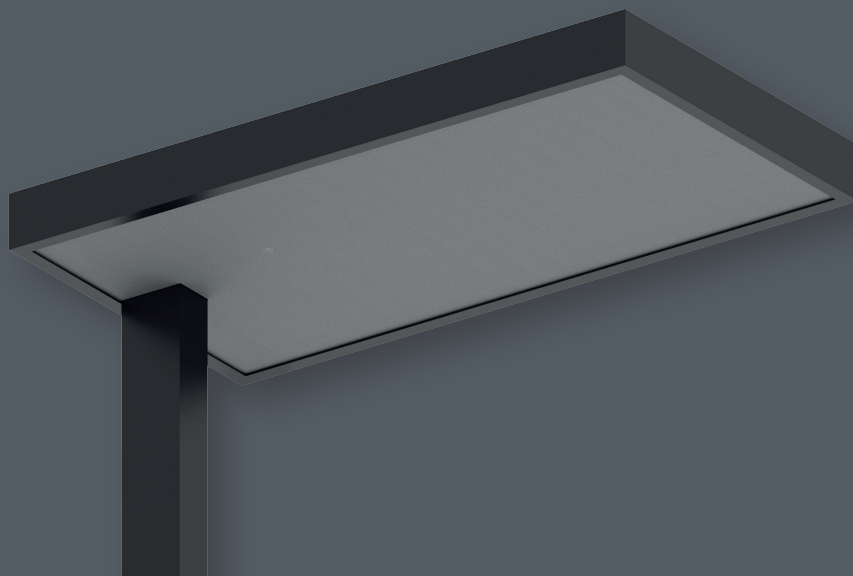




APPLICATION AREA

Our non-glare STAND LED SMART is perfectly suitable for the illumination of office spaces, especially working stations. The uniformity of the direct light of the D/I luminaire is ensured by the microprismatic PMMA diffuser. The light output of both light distributions can be controlled separately, while the colour temperature of the fixture is adjustable (2700 - 6500K). The aesthetically pleasing luminaire is controllable via an Android/iOS mobile phone or with a programmable remote control, to be ordered separately.



MATERIAL

Head unit and column of the luminaire: aluminum profile and hollow section.

Base plate: laser cut steel sheet.

The luminaire can be powder coated with 3 different colours of electrostatic paint (RAL9005, RAL9006, RAL9010).

Diffuser: microprismatic PMMA, indirect side: clear PC.

OPTIONS

A separate remote control can be ordered for the luminaire with 4 different scenes to be set on the programmable buttons. In addition, the colour temperature of the luminaire can be adjusted manually with separate buttons.



Order number	Type	Luminaire luminous flux* (lm)	Luminaire efficiency* (lm/W)	Luminaire power (W)	A (mm)	B (mm)	C (mm)	D (mm)	E (mm)	E2 (mm)	F (mm)	G (mm)	Weight (kg)
60 000 055 002	STAND LED SMART	5746	4917	102	635	335	52	2000	450	350	40	60	13,8

*the values are for 4000K and on full brightness

Options:

