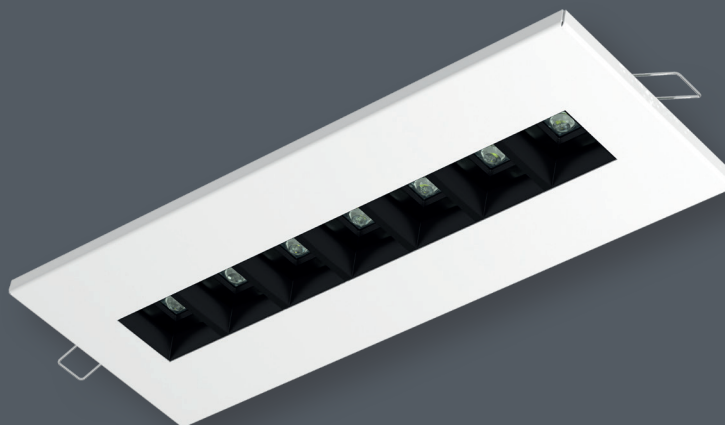


DAISY MINI

FIELD OF APPLICATION

The DAISY MINI range of luminaires are suggested for general illumination of public institutions, offices, banks. Glare-less lighting is achieved with lenses on the leds and shades.



BASE MATERIAL

Housing of luminaire: white color powder painted steel sheet.

Diffuser: polycarbonate (PC), in black or white color.

LED lense: clear PMMA lense.

INSTALLATION

The DAISY MINI luminaire can be recessed into artificial ceiling.

warranty 5 year	LED	230V 50Hz	UGR <19	SDCM 3	CRI >80	CCT 4000K	IP 20			Ta 25°C	CE
------------------------------	------------	----------------------------	-----------------------------	-------------------------	-----------------------------	----------------------------	------------------------	---	---	--------------------------	-----------

Order number	Type	LED Modules luminous flux (lm)	LED Modules efficiency (lm/W)	Luminaire luminous flux (lm)	Luminaire efficiency (lm/W)	LED Modules power (W)	Luminaire power (W)	A (mm)	B (mm)	C (mm)	F (mm)	F2 (mm)	Weight (kg)
60 000 000 5611	DAISY MINI-10	1400	182	1120	112	7,7	10	342	122	40	75	300	1,3

Options:

