



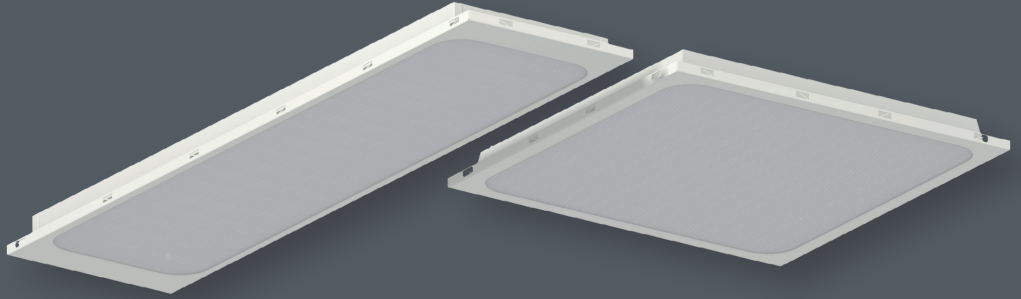
www.simotrade.hu

AREA OF USE

AERIA ELLA

AERIA ELLA Luminaire Family

The AERIA ELLA luminaire family is ideal for general-purpose lighting in apartments, offices, banks, hotels, public buildings, and corridors. Its prismatic lampshade surface provides uniform, glare-free illumination, ensuring both visual comfort and efficiency across various applications.



MATERIAL

Housing of luminaire: white powder coated steel sheet.

Diffuser: prismatic polycarbonate (PC) and opal sheet.

INSTALLATION

The luminaire can be recessed into false ceilings with visible grids.



Ordering code	Product name	LED Modules Lumen output (lm)	LED Modules Efficiency (lm/W)	Lumen output (lm)	Efficiency (lm/W)	LED Modules Power (W)	Power consumption (W)	A (mm)	B (mm)	C (mm)	Unit Weight (kg)
60 103 055 503	AERIA ELLA-36	5830	194	4290	119	30	36	1495	295	50	6,9
60 000 055 507	AERIA ELLA-49	7790	195	5830	119	40	49	1495	295	50	6,9
60 000 055 508	AERIA ELLA-35	5840	195	4160	119	30	35	1195	295	50	5,7
60 103 055 505	AERIA ELLA-44	7240	190	5130	117	38	44	1195	295	50	5,7
60 103 314 502	AERIA ELLA-38	6080	184	4240	111	33	38	595	595	55	5,3
60 103 314 501	AERIA ELLA-48	7370	175	5170	108	42	48	595	595	55	5,3

Available options:

